










# Depanelist DPL-ST

Ultimate PCB Depaneling Router



## Features & Advantages

-  Auto Tray Function
-  Fastest Cycle Time by New Crank Type Z-Axis
-  Wider Spindle Pitch (Min. 40mm)
-  Real-Time Monitoring of Spindle RPM
-  Shuttle Type In-Let Conveyor (Free Lay-Out)
-  Pass/Fail PCB Separation
-  Selective Use of Single or Dual Spindle
-  Programless Loader & Unloader Position
-  Bit Broken & Slip Down Detection
-  Dual Touch Monitors
-  Compact Footprint
-  Quick Model Changeover

## Options

-  Fingerprint Verification & Protocol Management
-  Teaching Data Conversion (CAD/CAM)
-  Network Module Tower Light for LMS or Machine Status Monitoring
-  Auto Tray Loading/Unloading with AGV System
-  Barcode Interlock & MES Interface
-  Real-Time Self-Diagnosis Dust Collector



# Depanelist @ DPL-ST

Ultimate PCB Depaneling Router

## Outstanding Features

Graphical UI with Dual Monitors



Compact Footprint



Crank Type Z-Axis & Single Spindle Use



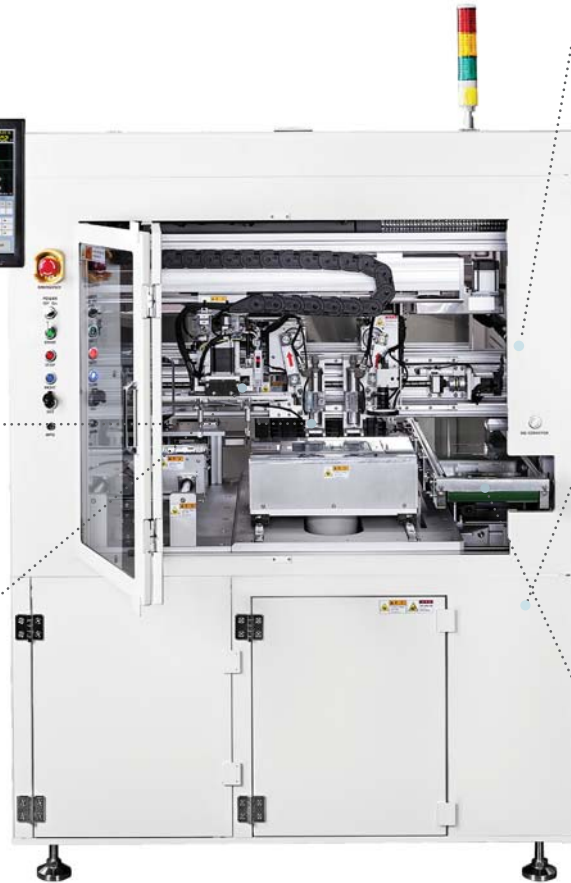
Auto Tray Function



Programless Loader & Unloader Position



Pass/Fail PCB Separation

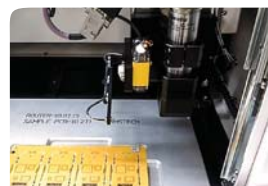


## Specifications

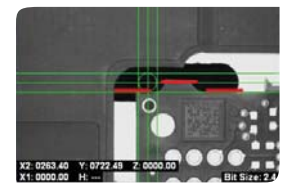
Technical Characteristics	Dimensions	1300x1500x1655mm (WxDxH)
	Weight	950Kg
	Moving Speed	1,000mm/sec(Max.)
	Cutting Speed	100mm/sec(Max.)
	Cutting Accuracy	±0.1mm
	Repeatability	±0.02mm
	Spindle Motor	1~5 Spindles
	Motor Specifications	Total 14 Axis Motorized
	Controller	Industrial PC Based Control
	Jig Type	Dedicated Pallet Type
	Program Environment	Windows(GUI) Based on PC
	Display	TFT LCD 17" Touch Monitor
	Data Acquisition	Camera with MPG
	Noise Level	75 ± 5 dB
Dust Collector	2Hp, 3Phase 220V or 380V	
Installation Requirements	Power Supply	1 Phase 220V 50/60Hz
	Air Pressure	5.5kg/cm <sup>2</sup> (80PSI)
PCB Specifications	Panel Size	Max 400 x 300 mm
	Thickness	0.4~3.2mm

## Options

Barcode Interlock & MES



Auto Pgm. & Inspection



Auto Box Unload



CAD/CAM Conversion

