

# LITE LUD

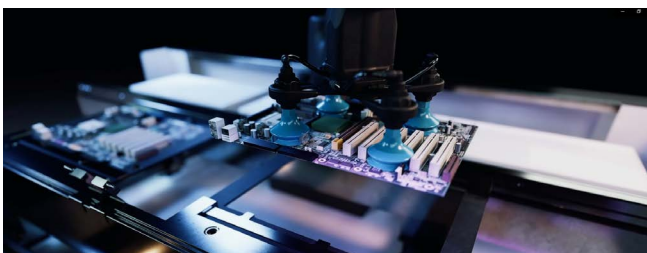
**PCB'S LOADER  
AND UNLOADER  
STATION.**



## CENTRALIZED LINE MANAGEMENT PROCESS STATION

**LITE LUD** is a centralized loading/unloading station that can be operated manually or automated via COBOT integration. This station facilitates centralized communication to an MES/FIS host, managing the traceability of the entire process line. It includes image analysis to confirm loading/process integrity, traceability, and a heads-up centralized KPI display.

Human interaction with the equipment has been thoroughly studied, focusing on both safety and ergonomics.



### UNIQUE CONCEPT

#### CONFIGURATION

- Multi-language.
- Full human interactivity safety.
- Optimized ergonomics with physiotherapist analysis.

#### PRODUCTIVITY

- Conveying speed: 300-2000 mm/min.
- 1 loading segment and 1 unloading segment.

#### FULL INTERCONNECTED TRACEABILITY [SMARTBOX] OPTION

- Process Tracker embedded software platform with on demand communication & KPI definition.
- Live process parameters log.
- Embedded trend analysis.

#### OPTIMIZATION

- Energy efficient
- Eco-friendly



An operator or Cobot will load/unload PCBs onto the conveyor, either with or without carriers. Products can be identified with an optional integrity check, which includes verifying product position, correct indexing in the carrier, absence

of foreign particles, and presence and integrity of all components. The unit is fully connected to the MES/FIS for process acknowledgment. Additionally, the lower conveyor can be fitted with a **SNAPCURE** module to optimize space utilization.



## FACILITY REQUIREMENTS

Dimensions (WxDxH)	1800 x 1280 x 2148 mm
Approx. weight	800 kg
Voltage	230 VAC
Transmission type	Chain or belt conveyor
SMEMA height	940-965 mm
Power	2.5 kW
Flow direction	L -> R   R -> L
Fixed rail	1 front rail
Signal	SMEMA
Edge clearance	5 mm
Return conveyor	Optional



## // APPLICATIONS

Coating/Dispensing lines, wave soldering or selective soldering lines, exotic component integration lines.

## STANDARD OPTIONS



### [SNAPVISION]

Super-fast 2D inspection and image analysis with advanced capabilities for coating, dispensing, component insertion, THT, and wave soldering process lines.



### [SNAPCURE]

LED radiation source options:

Power output: GEN 3 or GEN 5.

Single peak frequency:  
365, 385, 395, 405 nm.

Multi-frequency:  
UVC + UVA spectrum & IR.



## PROCESS MONITORING OPTIONS

- » Offline programming.
- » Remote control platform.

Thanks to our, **[SMARTBOX]** all recorded data can be shared with an MES/FIS environment and displayed through our embedded Process Tracker, providing enhanced process capability visibility via a local KPI display system.

### [SMARTBOX]



INDUSTRY 4.0



PROCESS TRACKER



**FACTORYCENTER**  
BARCELONA - SEOUL

**BUSINESSCENTER**  
AMERICA - EUROPE - AFRICA - ASIA



**FACTORYCENTER**  
BARCELONA

Carrer de la Masia en Notari, 4, 08800  
Vilanova i la Geltrú, Barcelona. Spain

[administrative@mstechcorp.eu](mailto:administrative@mstechcorp.eu)

**BUSINESSCENTER**

[sales@mstechcorp.eu](mailto:sales@mstechcorp.eu) - [services@mstechcorp.eu](mailto:services@mstechcorp.eu)

[WWW.MSTECHCORP.EU](http://WWW.MSTECHCORP.EU)

